



ANTIBIOTIC
REDUCTION



MINERAL
OPTIMIZATION



PRODUCTION
EFFICIENCY



IntelliBond® C high level

IntelliBond application and value in broilers



Why copper?

Copper is an essential trace mineral required for modern poultry production. Copper functions within the bird to maintain optimal nutritional status as well as productivity. Copper, when fed at higher levels, has been shown to provide improvements in both bird growth and feed efficiency.

The mineral source you choose can have a large impact on the level of results seen in the animal, with independent research showing significantly different results between various trace mineral sources. Utilising IntelliBond C may result in improvements in the mill, the feed, the bird and the environment over other sources.

IntelliBond® trace minerals meet the **highest quality standards** available in the poultry industry today



This results in significant reductions in the oxidation of essential nutrients **in the feed such as vitamins and fats.**



This ensures the **nutrients you have paid for are available to the bird** and can support efficient production and healthy growth.

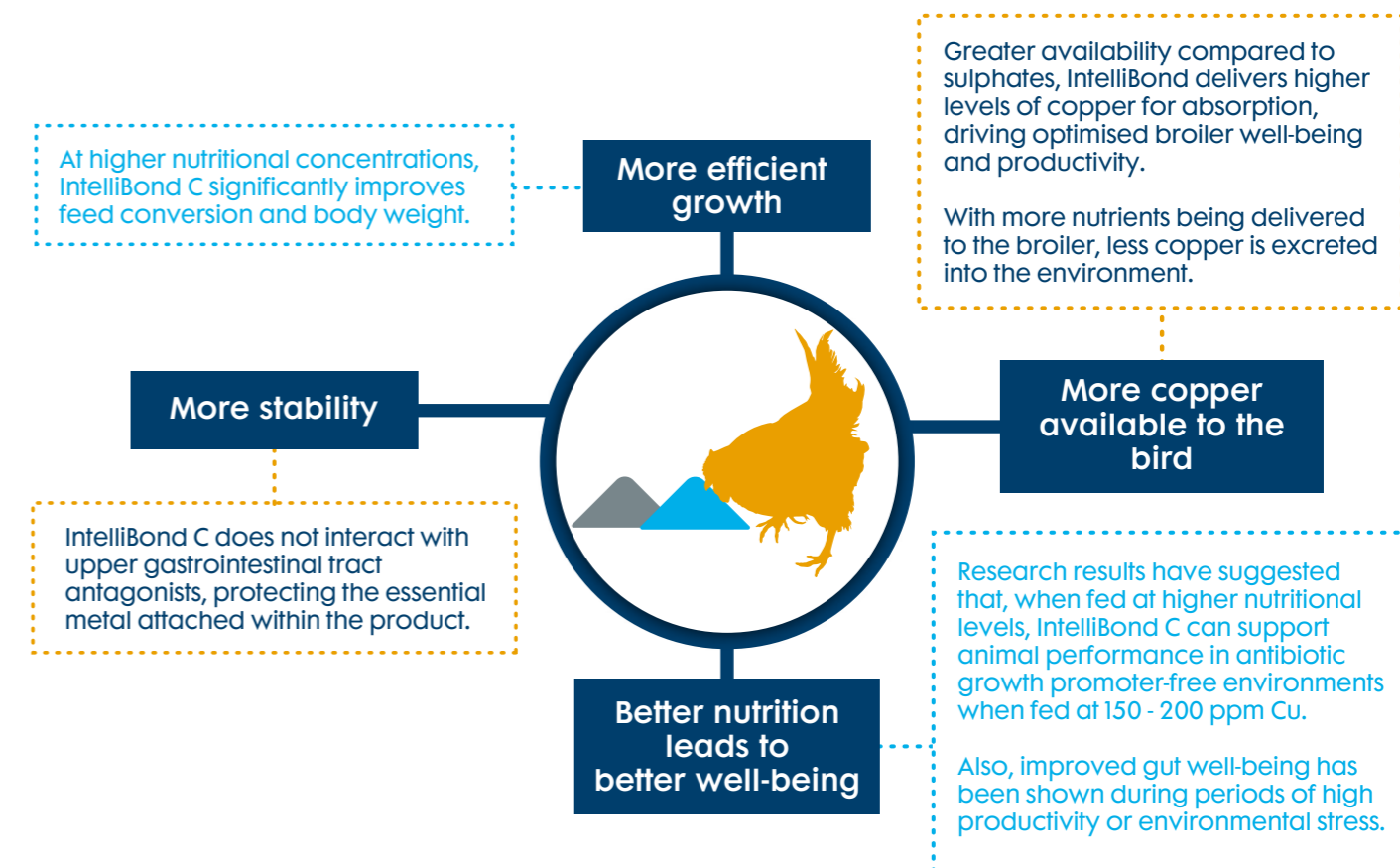


IntelliBond's low hygroscopicity **enhances the stability of premixes** compared to sulphate sources.

Key advantages of IntelliBond C

<p>Low Solubility</p>	<p>IntelliBond trace minerals avoid being tied up with antagonists in the upper gastrointestinal tract. More of the copper contained within IntelliBond is available to the bird in the lower gastrointestinal tract, where they are efficiently absorbed. These minerals can play an additional role in optimising gut health and immune function.</p>	<p>Improved relative availability of IntelliBond C compared with copper sulphate. Ensures an improved level of mineral absorption to support bird well-being and growth.</p>
<p>Unique Crystalline Structure</p>	<p>Ensures the consistent, sustained release of copper within the lower gastrointestinal tract, optimising absorption and overall availability within the bird.¹⁴</p>	

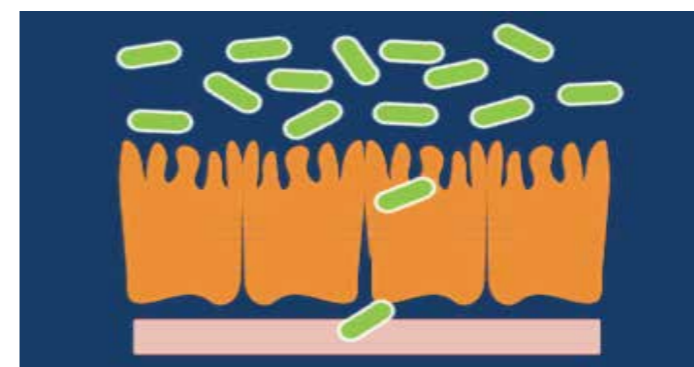
Why is IntelliBond® the smart choice?



High levels of Copper

Feeding high levels of copper can help to support growth performance by:

- **helping to reduce disease challenge**
Feeding high levels may help to prevent the overgrowth of multiple pathogens, which can occur during a gut health challenge.
- **nutrient sparing effect, e.g. amino acids and vitamins**
By reducing the number of microflora present in the hind gut, more nutrients are now available to the bird to support improved productivity.



IntelliBond®, improving feed conversion ratio

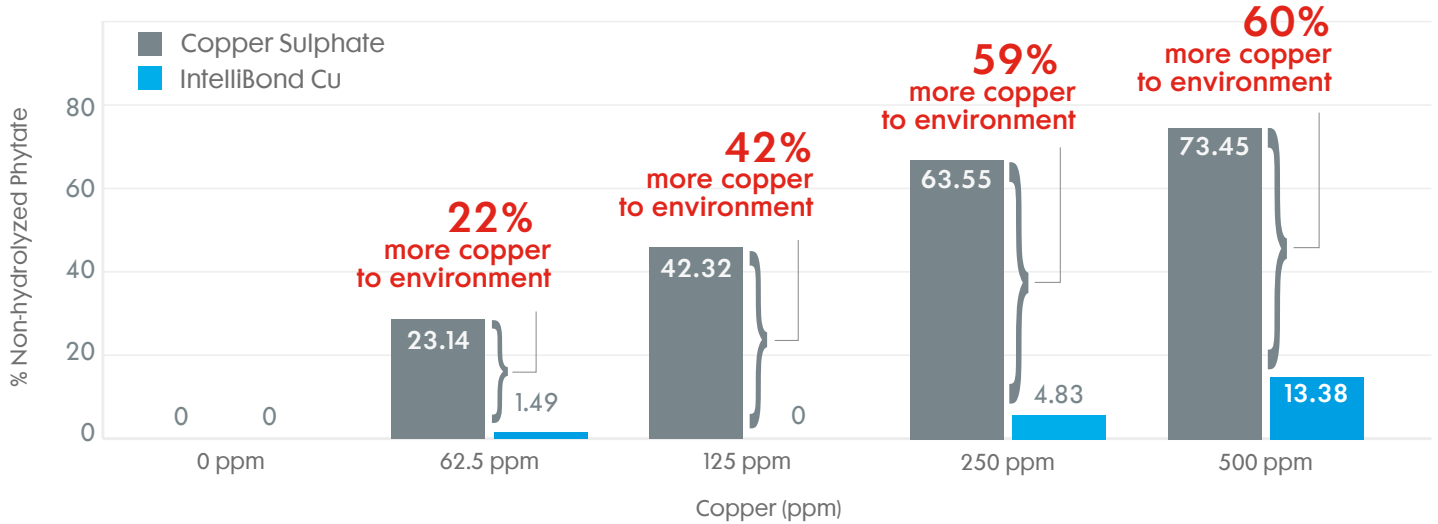
Multiple university and institute trials have shown an improvement in feed conversion ratio in broilers when using IntelliBond C vs copper sulphate.

Table 1. Improvement in feed conversion ratio (FCR) in birds when using IntelliBond® C vs copper sulphate.

Research location	IntelliBond C FCR improvement
University of Florida	2.5 pts
PARC Institute	5.2 pts
PARC Institute	5.0 pts
Foster Farms	4.0 pts
Purdue University	9.0 pts
PARC Institute	5.0 pts
AH Pharma	3.0 pts
Southern Poultry	3.5 pts
AH Pharma	5.0 pts
PARC Institute	3.0 pts
U Maryland /USDA	8.5 pts
Southern Poultry	5.8 pts
Texas A & M University	7.6 pts
Average increase in FCR improvement using IntelliBond C vs CuSO4	5.2 pts

IntelliBond Cu vs copper sulphate:

IntelliBond C significantly reduces the excretion of Phytate Phosphorus to the environment



IntelliBond® portfolio

IntelliBond products represent one of the highest quality trace mineral technologies available for animal nutrition today, creating a comprehensive portfolio to meet a wide range of animal performance needs. Our minerals are designed to have ideal reactivity to avoid destructive interactions and promote availability, driving optimised animal health and productivity. IntelliBond mineral quality is assured by one of the most robust quality control and quality assurance programs in the industry.

- IntelliBond C (Copper hydroxychloride)
- IntelliBond Z (Zinc hydroxychloride)
- IntelliBond M (Manganese hydroxychloride)

Built on Science

Trouw Nutrition is committed to advancing the scientific knowledge and understanding of trace mineral nutrition through basic and applied research. We invest in research on trace mineral nutrition and the unique properties of the IntelliBond crystalline structure that we have been manufacturing for over 20 years.

**IntelliBond C
have many proven
advantages in broilers
over sulphate-based
mineral forms.***

*Proven with > 100 of independent
research evaluations



Our numerous food safety and quality certifications mean sellers and users from around the world can be confident when they turn to IntelliBond trace minerals.

Learn
more visit
Selko.com

Ask your Nutri Pro representative how IntelliBond can support animal productivity and health.

Disclaimer: The information in this document is believed to be correct as of the date issued. Given the variety of factors that can affect the use of a Selko product, the user is responsible for determining whether the Selko product and dosage is fit for a particular purpose and suitable for user's method of use. Selko B.V. or any of its affiliates makes no warranties, including but not limited to warranty of merchantability or fitness for a particular purpose. Product labelling and associated claims may differ based on government requirements. All quotations, orders, confirmations and transactions are subject to our General Conditions of Sale (www.nutreco.com). The applicability of any other terms and conditions is explicitly rejected. © Trouw Nutrition. The trademarks shown in this document are registered in The Netherlands, The USA and other countries. These trademarks are owned by Selko B.V. or Micronutrients USA LLC or Trouw International B.V. IntelliBond products are registered as Selko IntelliBond in The Netherlands, and other countries.